

FELLOWES PRO SERIES INLINE DOCUMENT HOLDER



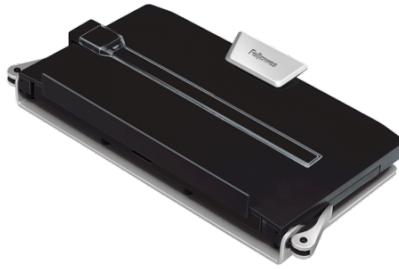
\$110.00

Places documents between monitor and keyboard for optimal ergonomic viewing range

SKU: 8039401 | **Categories:** [Document Holders](#), [Office Accessories](#) |



GALLERY IMAGES



PRODUCT DESCRIPTION

Fellowes Pro Series Inline Document Holder

- Places documents between monitor and keyboard for optimal ergonomic viewing range
- Promotes neutral posture and helps reduce awkward neck and eye movements
 - Offers six separate angle adjustments from 75° to 25° incline
- Top and bottom adjust to accommodate oversized documents
 - Supports books, catalogs, and landscape sheets
- Moveable, magnetic line guide holds documents in place
 - Stable weighted base; unit folds flat for easy storage
 - Holds up to 250 pages of letter/legal size documents

Specifications

- Capacity 250
- Capacity (sheets) 200-250
 - Color: Black
- Document Holder Typ In-line
- Item H x W x D (inches) 7.50 x 12.00 x 2.50
 - Item Number 8039401
 - Item weight (lbs) 3.30
 - Adjustable Tilt Yes
 - Size :A4, Legal, Letter
 - Adjust Yes
- UPC Code 043859530946
- Warranty Limited Lifetime

ADDITIONAL INFORMATION

Weight

4 kg

Dimensions

50 × 40 × 15 cm

THERE ARE NO REVIEWS YET.

